

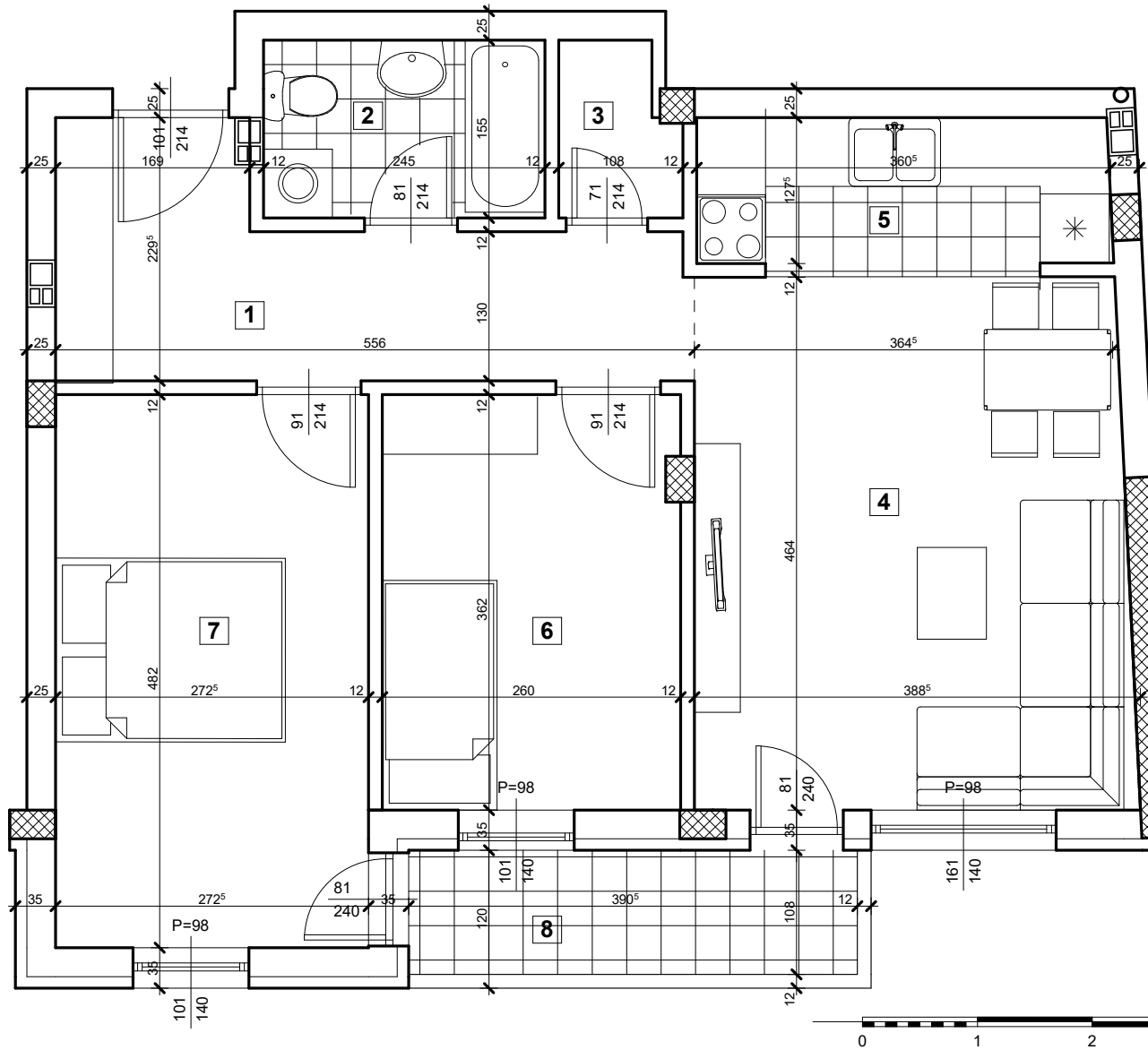
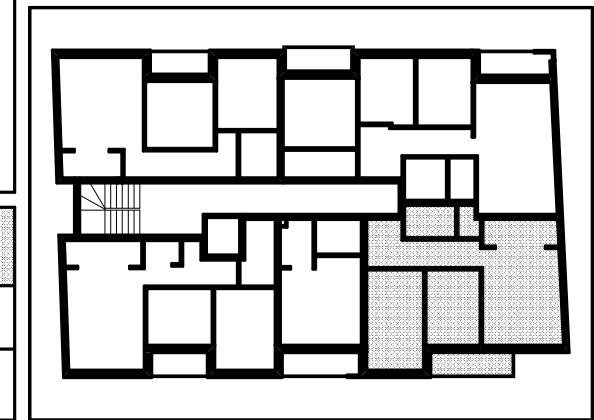
STAMBENI OBJEKAT Su+P+3+Pk
 ulica Zlatarićeva br. 26, Petrovaradin

S12

Stan 12 - trosoban

| redni broj | naziv prostorije | P (podna) (m ²) | P (korisna) (m ²) |
|------------------------|--------------------------|-----------------------------|-------------------------------|
| 1 | predsoblje | 8.81 | 8.81 |
| 2 | kupatilo | 3.79 | 3.79 |
| 3 | ostava | 1.48 | 1.48 |
| 4 | dn. boravak + trpezarija | 17.52 | 17.52 |
| 5 | kuhinja | 4.85 | 4.85 |
| 6 | soba | 9.35 | 9.35 |
| 7 | soba | 13.13 | 13.13 |
| 8 | lođa | 4.22 | 4.22 |
| Stan 12 UKUPNO: | | 63.15 | 63.15 |

D.O.O."DE-VAS PROJECT"
 ul. Save Kovačevića br. 36, Turija



S12

STAN S12, trosoban - 63,15 m²

SPRAT

NAPOMENA

DRUGI