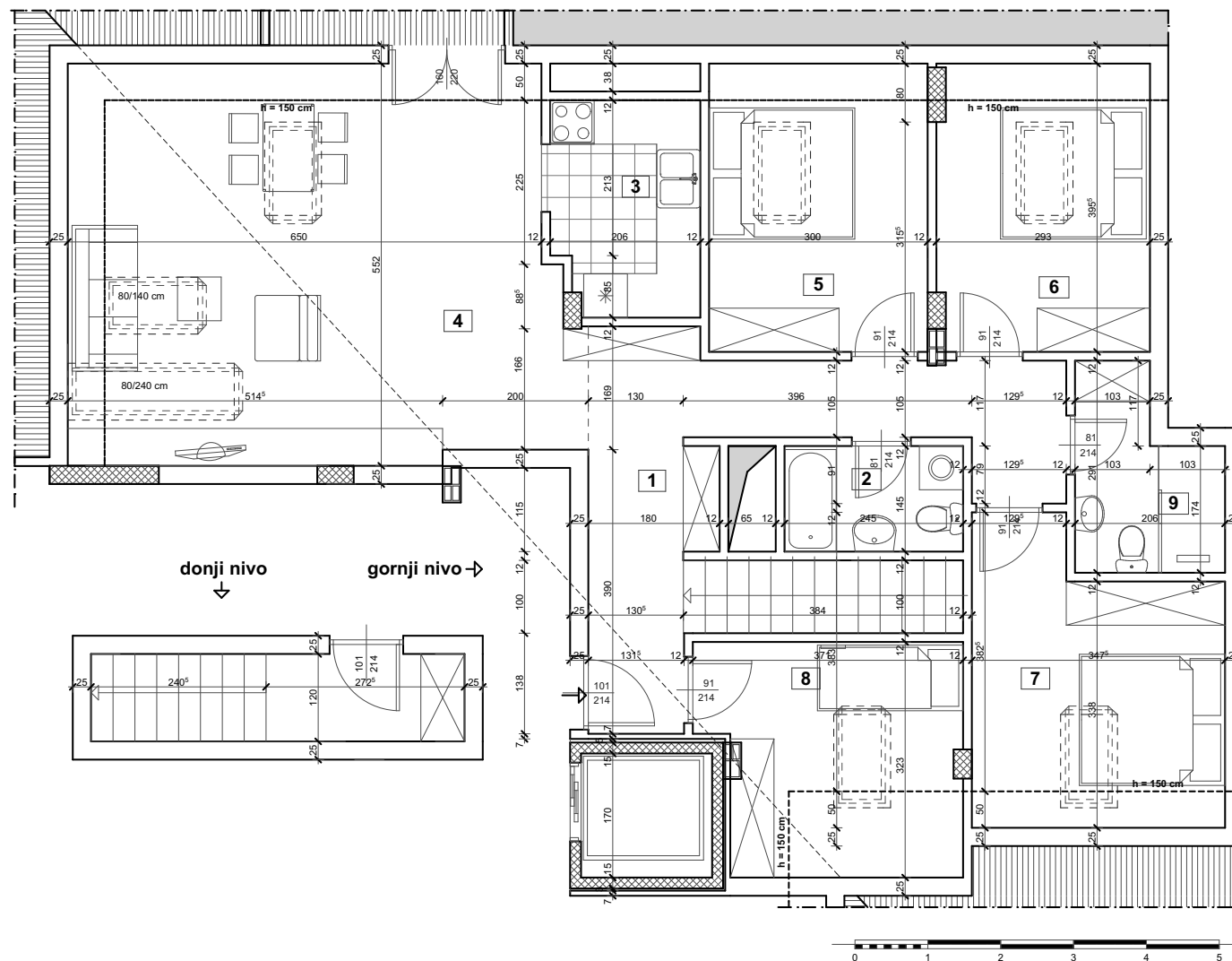


STAMBENI OBJEKAT Po+P+3+Pk
ulica Okrugićeva br. 17, Petrovaradin

S40



Stan 40 - duplex (4,5 soban)

1	ulaz, stepenice	ker.pl	6,15	3,27
donji nivo UKUPNO:			6,15	3,27
1	predsoblje i stepenice	ker.pl	18,66	18,66
2	kupatilo	ker.pl	3,55	3,55
3	kuhinja	ker.pl	5,95	5,95
4	dn.boravak + trpezarija	parket	36,92	31,14
5	soba	parket	11,86	10,36
6	soba	ker.pl	11,43	10,02
7	soba	parket	12,97	11,23
8	soba	parket	10,92	8,09
9	kupatilo	ker.pl	4,78	4,78
gornji nivo UKUPNO:			117,04	103,78
Duplex 40 UKUPNO:			123,19	107,05

D.O.O."DE-VAS 017"
 ul. Vojvode Šupljikca br. 19
 Novi Sad



S40

STAN S40, duplex - 103,32 m²

SPRAT

NAPOMENA

POTKROVLJE