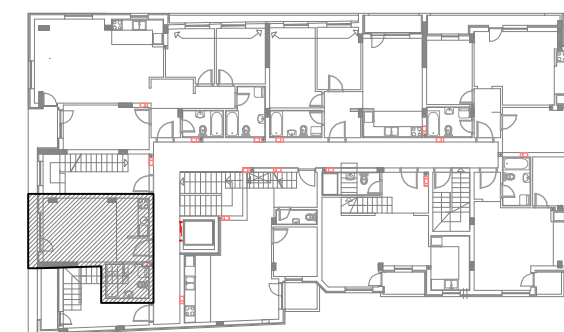
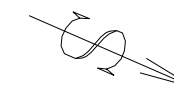


**stan 26**



**Potkrovlje**



**Stan 26 - potkrovlje**

S26 -garsonjera					
BR.	NAZIV	VRSTA	POVRŠINA	KOEF.	KORISNA
	PROSTORIJE	PODA	PODA		POVRŠINA
1	Ulazni hodnik	ker. pločice	2.56 m2	0.97	2.48 m2
2	Kuhinja	ker. pločice	4.12 m2	0.97	4.00 m2
3	Dnevna soba i trpezarija	parket	15.04 m2	0.97	14.59 m2
4	Kupatilo	ker. pločice	4.87 m2	0.97	4.72 m2
5	Terasa	ker. pločice	1.70 m2	0.97	1.65 m2
Ukupno stan S26 bez koef.:					28.29 m2
Ukupno stan S26 sa koef. 0.97:					27.44 m2