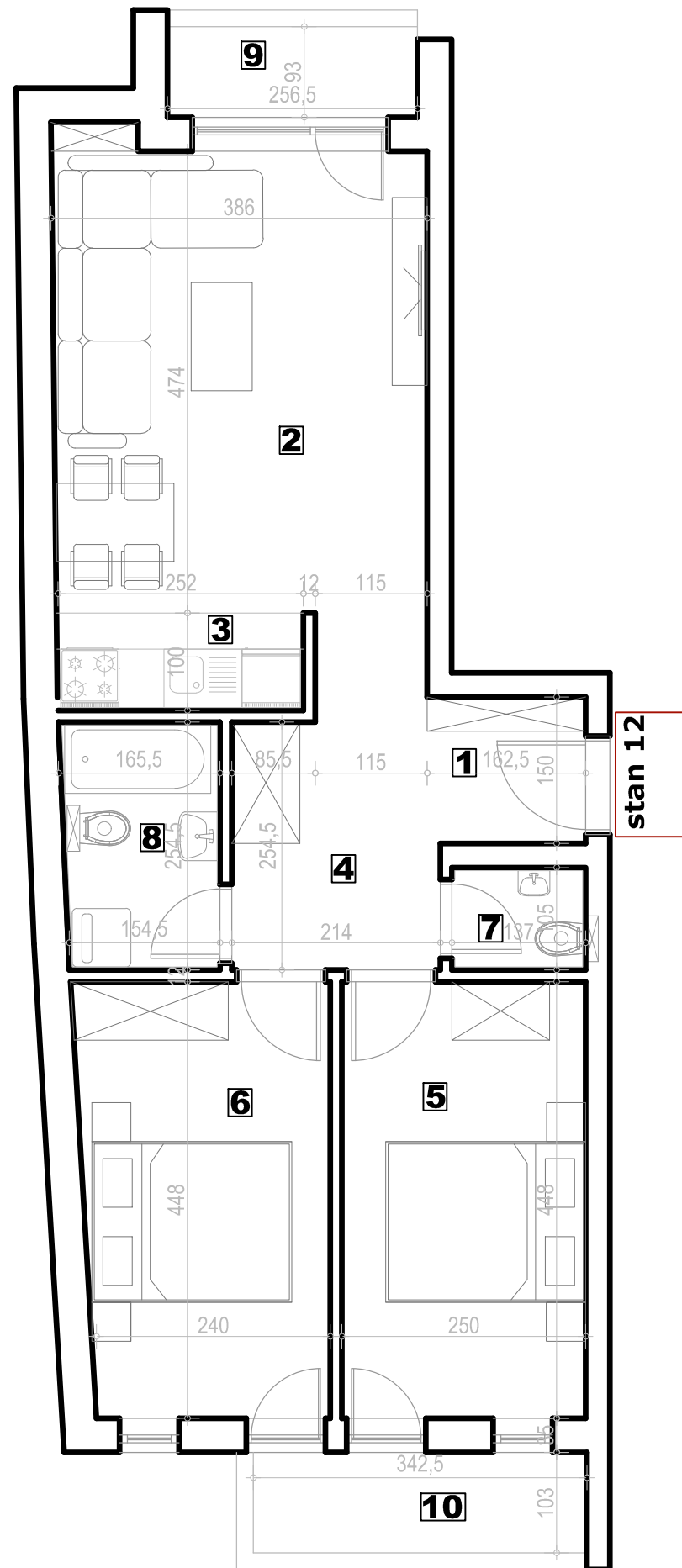


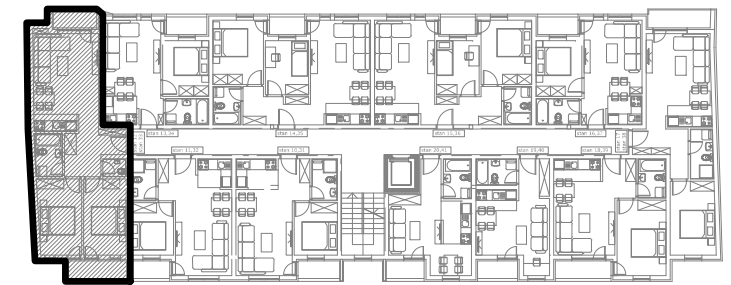
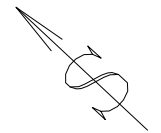
stambena zgrada Su+P+3+Pk, Okrugićeva 24/26, Novi Sad



napomena: moguća su minimalna odstupanja usled postavljanja konstruktivnih elemenata i instalacionih vertikalna



I SPRAT



### Stan 12 - I sprat

S12 - trosoban stan					
BR.	NAZIV PROSTORIJE	VRSTA PODA	POVRŠINA PODA	KOEF.	KORISNA POVRŠINA
1	Ulazni hodnik	parket	4.35 m <sup>2</sup>	0.97	4.22 m <sup>2</sup>
2	Dnevni boravak i trpezarija	parket	18.15 m <sup>2</sup>	0.97	17.61 m <sup>2</sup>
3	Kuhinja	ker. pločice	2.52 m <sup>2</sup>	0.97	2.44 m <sup>2</sup>
4	Hodnik	parket	4.64 m <sup>2</sup>	0.97	4.50 m <sup>2</sup>
5	Soba	parket	11.11 m <sup>2</sup>	0.97	10.78 m <sup>2</sup>
6	Soba	parket	11.34 m <sup>2</sup>	0.97	11.00 m <sup>2</sup>
7	WC	ker. pločice	1.44 m <sup>2</sup>	0.97	1.40 m <sup>2</sup>
8	Kupatilo	ker. pločice	4.07 m <sup>2</sup>	0.97	3.95 m <sup>2</sup>
9	Lođa	ker. pločice	3.51 m <sup>2</sup>	0.97	2.38 m <sup>2</sup>
10	Lođa	ker. pločice	3.53 m <sup>2</sup>	0.97	3.42 m <sup>2</sup>
Ukupno stan S12 bez koef.:					64.66 m <sup>2</sup>
Ukupno stan S12 sa koef. 0.97:					61.70 m <sup>2</sup>