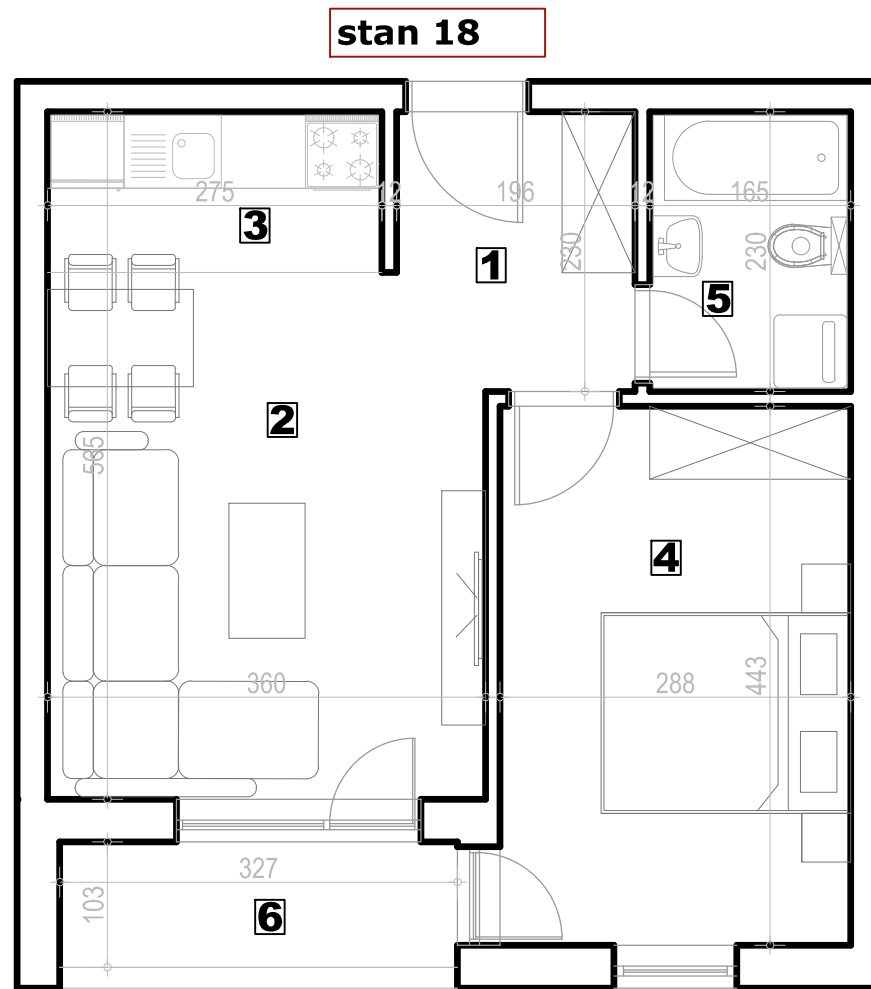
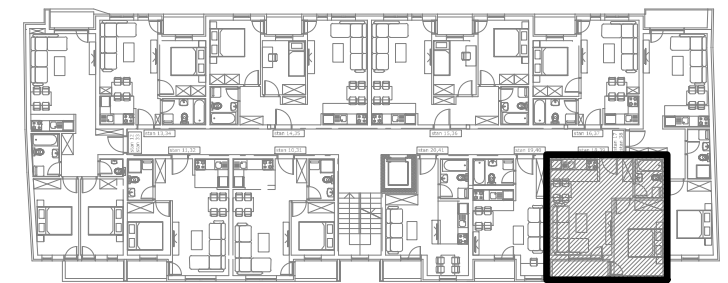
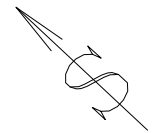


stambena zgrada Su+P+3+Pk, Okrugićeva 24/26, Novi Sad



I SPRAT



### Stan 18 - I sprat

S18 - dvosoban stan					
BR.	NAZIV PROSTORIJE	VRSTA PODA	POVRŠINA PODA	KOEF.	KORISNA POVRŠINA
1	Ulazni hodnik	parket	4.15 m <sup>2</sup>	0.97	4.03 m <sup>2</sup>
2	Dnevni boravak i trpezarija	parket	15.23 m <sup>2</sup>	0.97	14.77 m <sup>2</sup>
3	Kuhinja	ker. pločice	3.63 m <sup>2</sup>	0.97	3.52 m <sup>2</sup>
4	Soba	parket	12.76 m <sup>2</sup>	0.97	12.38 m <sup>2</sup>
5	Kupatilo	ker. pločice	3.80 m <sup>2</sup>	0.97	3.69 m <sup>2</sup>
6	Lođa	ker. pločice	3.37 m <sup>2</sup>	0.97	3.27 m <sup>2</sup>
Ukupno stan S18 bez koef.:					42.94 m <sup>2</sup>
Ukupno stan S18 sa koef. 0.97:					41.65 m <sup>2</sup>

napomena: moguća su minimalna odstupanja usled postavljanja konstruktivnih elemenata i instalacionih vertikalna