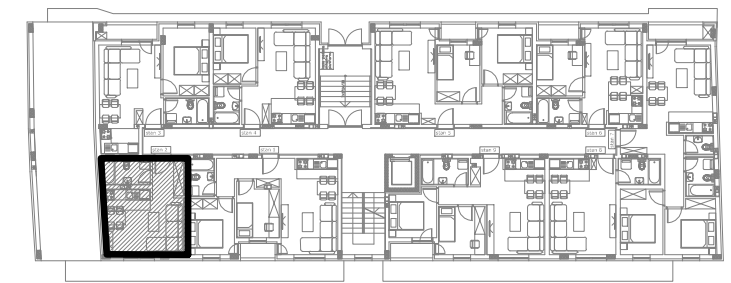
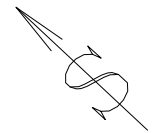


PRIZEMLJE



### Stan 2 - prizemlje

S2 - garsonjera					
BR.	NAZIV PROSTORIJE	VRSTA PODA	POVRŠINA PODA	KOEF.	KORISNA POVRŠINA
1	Ulazni hodnik	parket	4.07 m <sup>2</sup>	0.97	3.95 m <sup>2</sup>
2	Dnevni boravak i trpezarija	parket	16.50 m <sup>2</sup>	0.97	16.01 m <sup>2</sup>
3	Kuhinja	ker. pločice	3.39 m <sup>2</sup>	0.97	3.29 m <sup>2</sup>
4	Kupatilo	ker. pločice	4.41 m <sup>2</sup>	0.97	4.28 m <sup>2</sup>
Ukupno stan S2 bez koef.:					28.37 m <sup>2</sup>
Ukupno stan S2 sa koef. 0.97:					27.52 m <sup>2</sup>