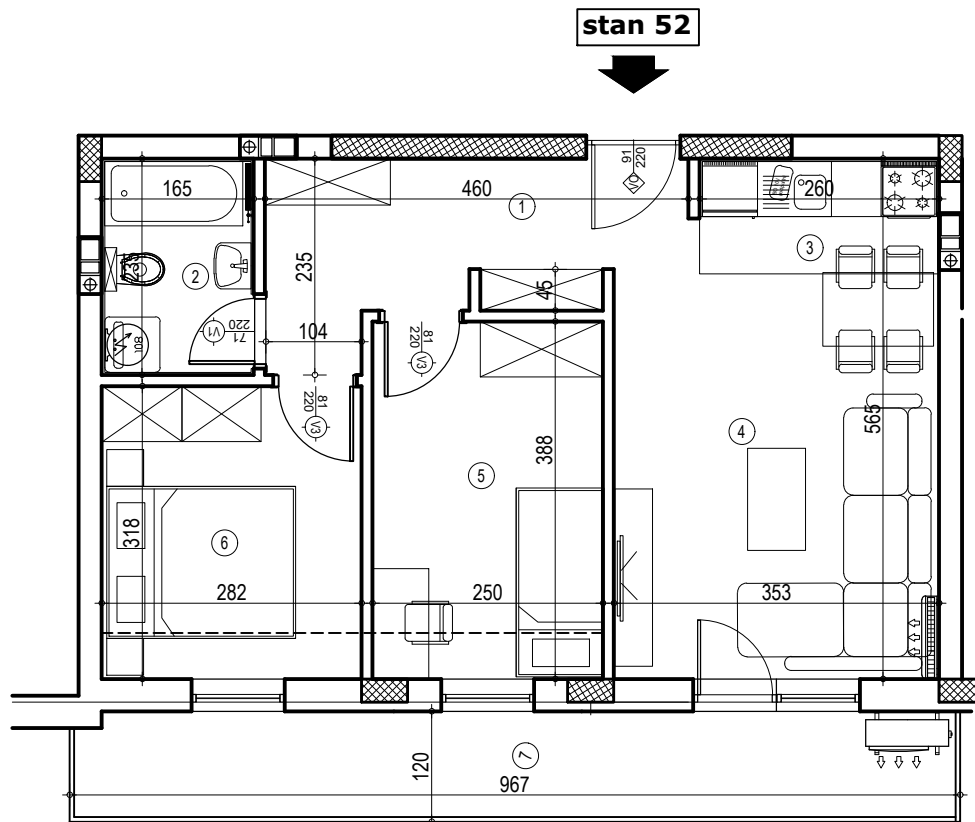
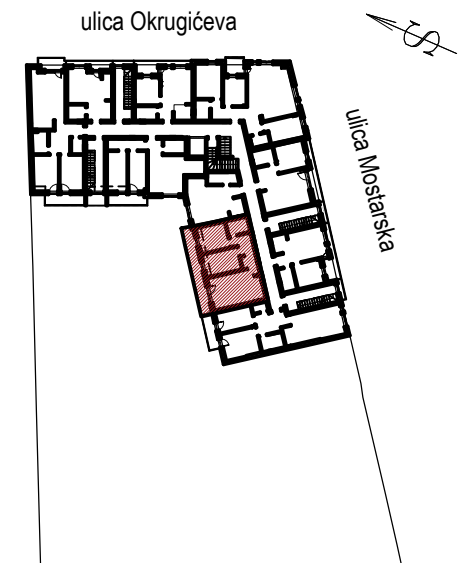


stambena zgrada Po+Pr+3+Pk, ul.Mostarska 1,3,5, Petrovaradin



POTKROVLJE



### Stan 52- potkrovlje

BR.	NAZIV PROSTORJE	VRSTA PODA	POVRŠINA PODA	KOEF.	KORISNA POVRŠINA
1	Ulaz	parket	7.62 m2	1.00	7.62 m2
2	Kupatilo	ker. pločice	3.87 m2	1.00	3.87 m2
3	Kuhinja	ker. pločice	3.25 m2	1.00	3.25 m2
4	Dnevna soba	parket	15.86 m2	1.00	15.86 m2
5	Soba	parket	9.69 m2	1.00	9.69 m2
6	Soba	parket	8.96 m2	1.00	8.96 m2
7	Loda	ker. pločice	11.48 m2	1.00	11.48 m2
				<b>UKUPNO:</b>	<b>60.73 m2</b>
				k-0.97:	<b>58.91 m2</b>