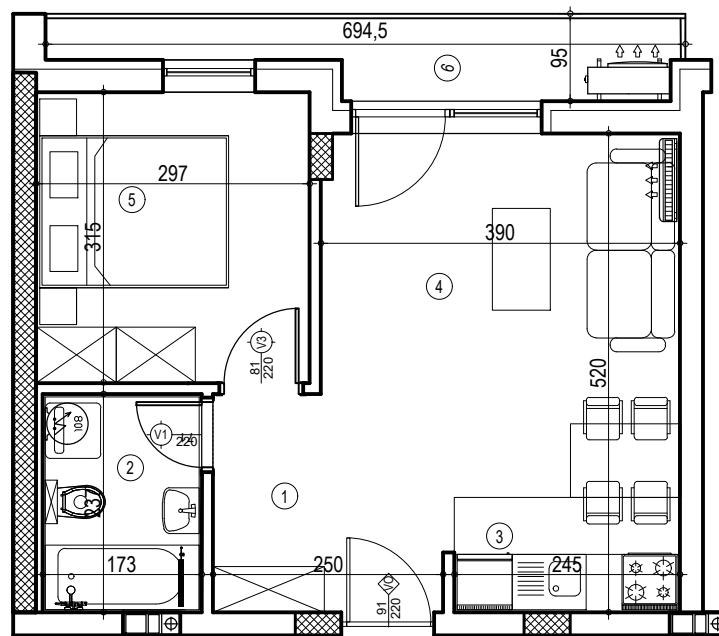


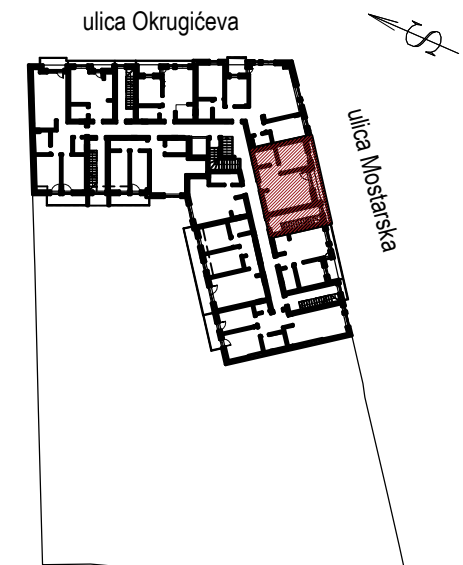
stambena zgrada Po+Pr+3+Pk, ul.Mostarska 1,3,5, Petrovaradin



stan 57



POTKROVLJE



Stan 57- potkrovlje

BR.	NAZIV PROSTORUJE	VRSTA PODA	POVRŠINA PODA	KOEF.	KORISNA POVRŠINA
1	Ulaz	parket	4.90 m2	1.00	4.90 m2
2	Kupatilo	ker. pločice	3.70 m2	1.00	3.70 m2
3	Kuhinja	ker. pločice	3.06 m2	1.00	3.06 m2
4	Dnevna soba	parket	16.88 m2	1.00	16.88 m2
5	Soba	parket	9.74 m2	1.00	9.74 m2
6	Loda	ker. pločice	3.44 m2	1.00	3.44 m2
UKUPNO:					41.72 m2
k-0,97:					40.47 m2