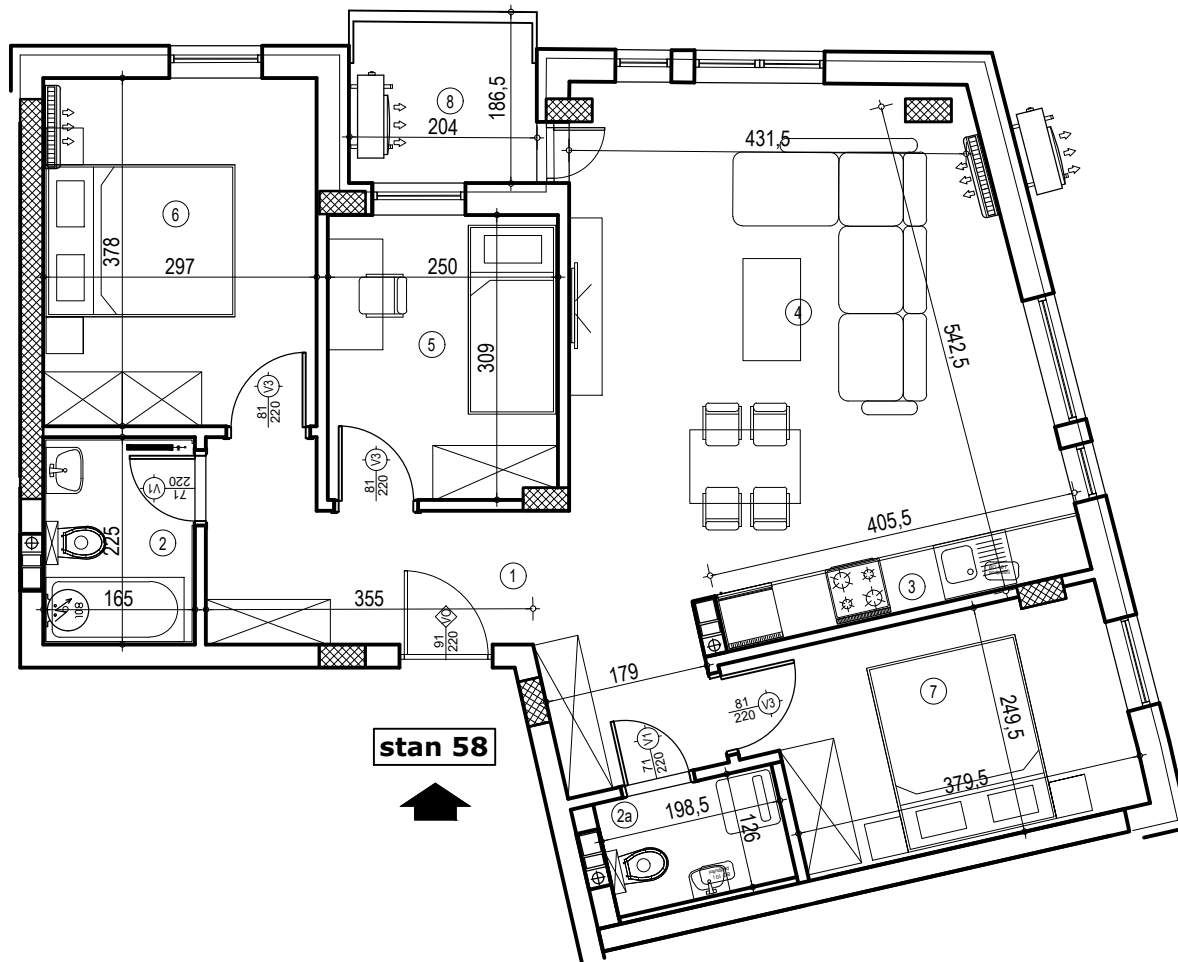
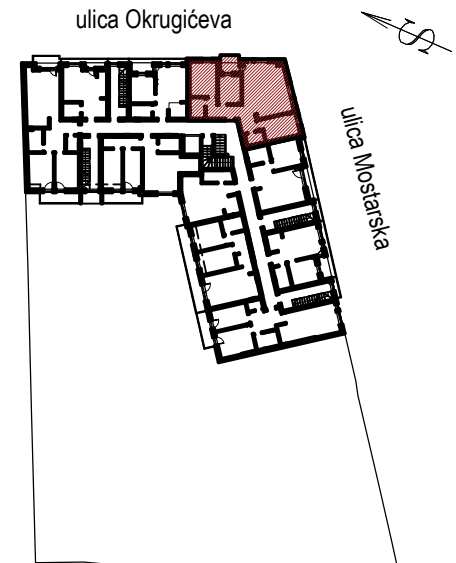


stambena zgrada Po+Pr+3+Pk, ul.Mostarska 1,3,5, Petrovaradin



POTKROVLJE



Stan 58- potkrovlje

BR.	NAZIV PROSTORJE	VRSTA PODA	POVRŠINA		KOE.F.	KORISNA POVRŠINA
			PODA	PODA		
1	Ulaz	parket	10.40	m2	1.00	10.40 m2
2	Kupatilo	ker. pločice	3.70	m2	1.00	3.70 m2
2a	Wc	ker. pločice	2.22	m2	1.00	2.22 m2
3	Kuhinja	ker. pločice	2.53	m2	1.00	2.53 m2
4	Dnevna soba	parket	25.56	m2	1.00	25.56 m2
5	Soba	parket	7.67	m2	1.00	7.67 m2
6	Soba	parket	11.23	m2	1.00	11.23 m2
7	Soba	parket	10.76	m2	1.00	10.76 m2
8	Loda	ker. pločice	3.55	m2	1.00	3.55 m2
UKUPNO:						77.62 m2
k-0,97:						75.29 m2