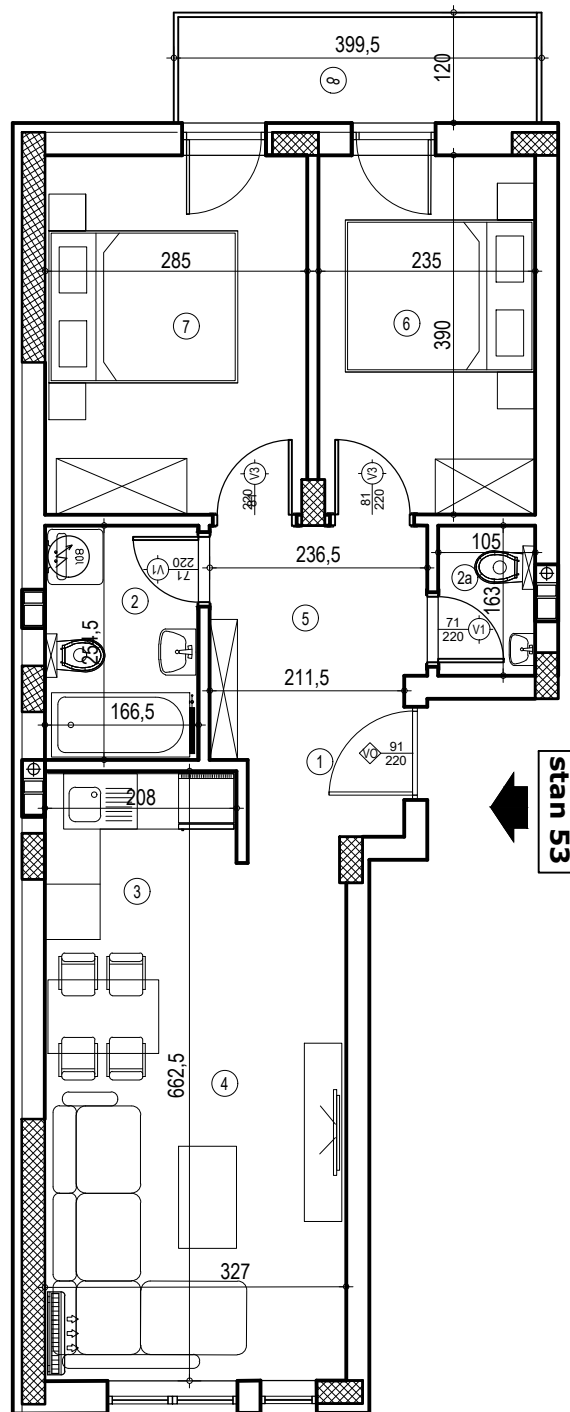
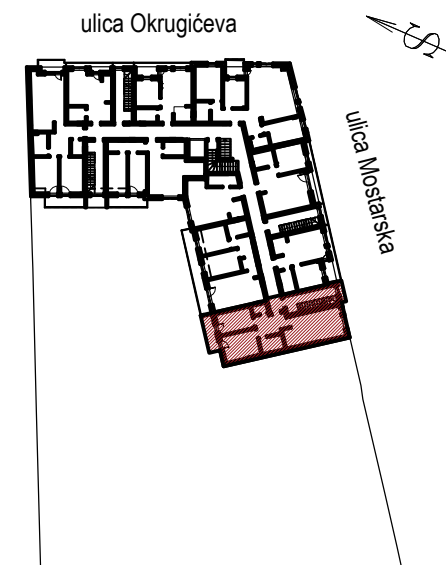


stambena zgrada Po+Pr+3+Pk, ul.Mostarska 1,3,5, Petrovaradin



POTKROVLJE



Stan 53- potkrovlje

BR.	NAZIV PROSTORUJE	VRSTA PODA	POVRŠINA PODA	KOEF.	KORISNA POVRŠINA
1	Ulaz	parket	1.78 m ²	1.00	1.78 m ²
2	Kupatilo	ker. pločice	4.23 m ²	1.00	4.23 m ²
2a	Wc	ker. pločice	1.71 m ²	1.00	1.71 m ²
3	Kuhinja	ker. pločice	3.19 m ²	1.00	3.19 m ²
4	Dnevna soba	parket	17.95 m ²	1.00	17.95 m ²
5	Deležman	parket	5.00 m ²	1.00	5.00 m ²
6	Soba	parket	9.15 m ²	1.00	9.15 m ²
7	Soba	parket	11.08 m ²	1.00	11.08 m ²
8	Loda	ker. pločice	4.73 m ²	1.00	4.73 m ²
UKUPNO:					58.82 m²
k-0,97:					57.06 m²