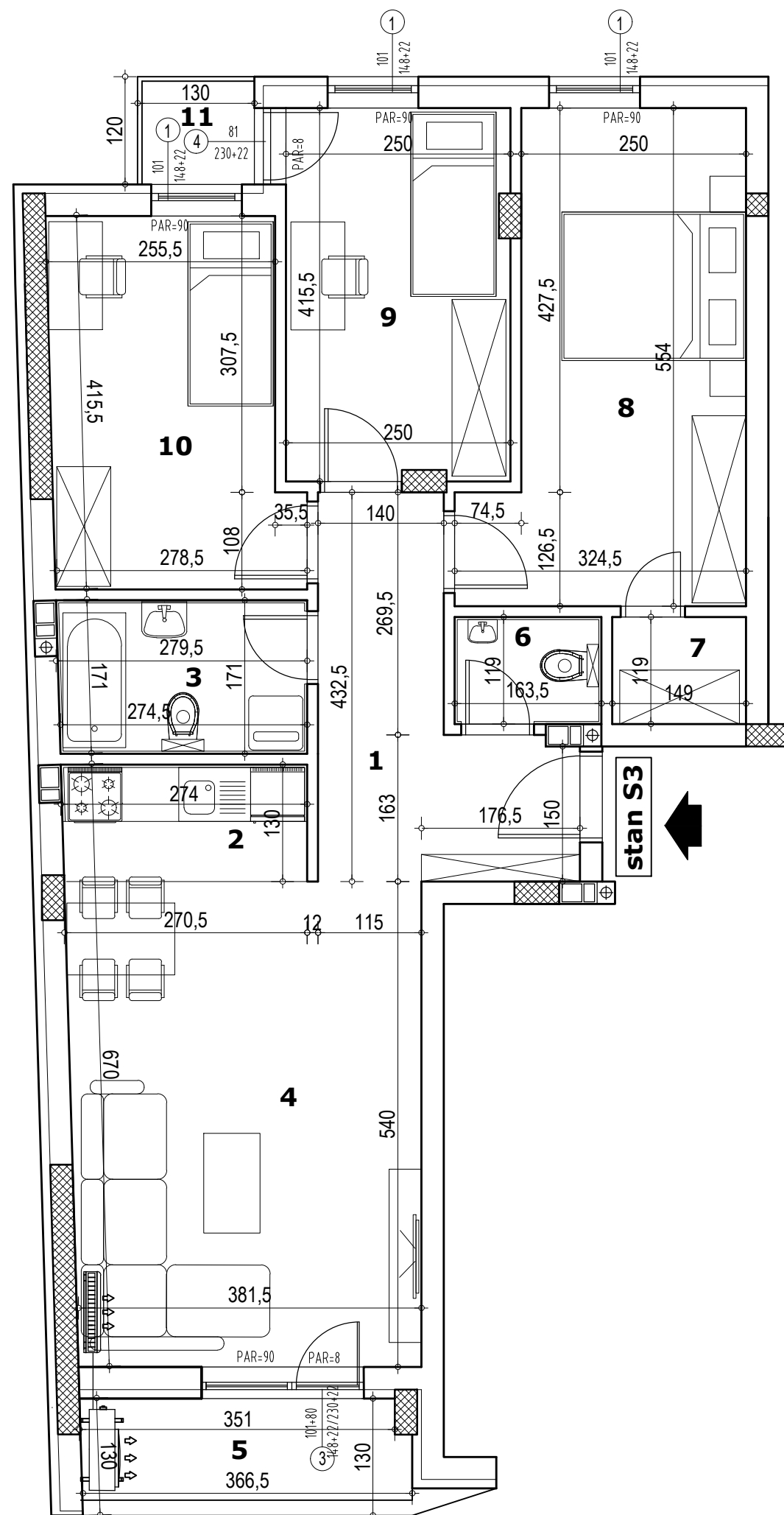


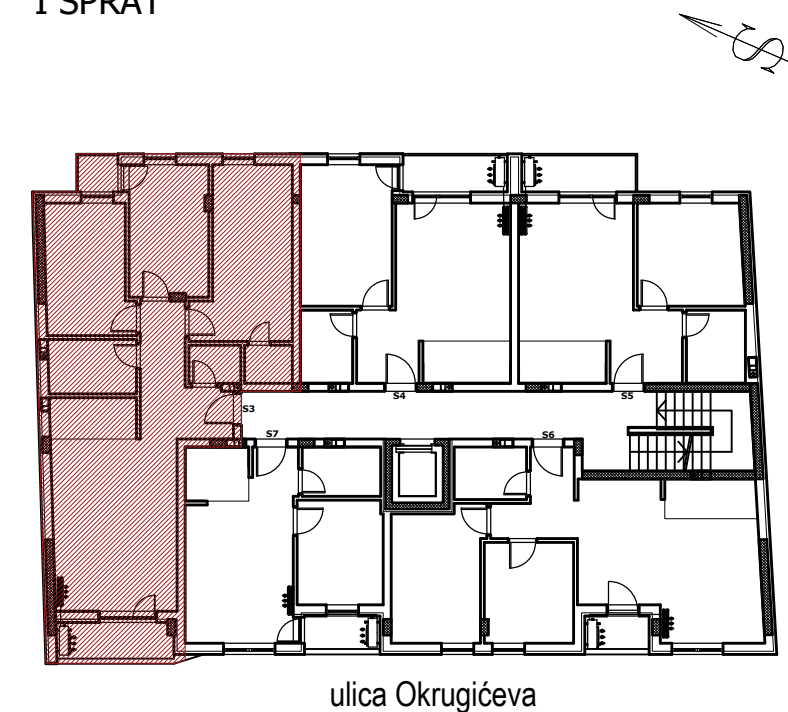
stambena zgrada Po+Pr+3+Pk, ulica Okrugičeva 21, Petrovaradin



napomena: moguća su minimalna odstupanja usled postavljanja konstruktivnih elemenata i instalacionih vertikala



I SPRAT



S3 - četvorosoban stan

BR.	NAZIV PROSTORIJE	VRSTA PODA	POVRŠINA PODA	KOEF.	KORISNA POVRŠINA
1	Ulazni hodnik	parket	8.52 m <sup>2</sup>	0.97	8.26 m <sup>2</sup>
2	kuhinja	ker. pločice	3.53 m <sup>2</sup>	0.97	3.42 m <sup>2</sup>
3	kupatilo	ker. pločice	4.73 m <sup>2</sup>	0.97	4.59 m <sup>2</sup>
4	dnevni boravak	parket	21.01 m <sup>2</sup>	0.97	20.38 m <sup>2</sup>
5	lođja	ker. pločice	4.08 m <sup>2</sup>	0.97	3.96 m <sup>2</sup>
6	wc	ker. pločice	1.95 m <sup>2</sup>	0.97	1.89 m <sup>2</sup>
7	garderoba	parket	1.77 m <sup>2</sup>	0.97	1.72 m <sup>2</sup>
8	soba	parket	14.78 m <sup>2</sup>	0.97	14.34 m <sup>2</sup>
9	soba	parket	10.25 m <sup>2</sup>	0.97	9.94 m <sup>2</sup>
10	soba	parket	10.76 m <sup>2</sup>	0.97	10.44 m <sup>2</sup>
11	balkon	ker. pločice	1.56 m <sup>2</sup>	0.97	1.51 m <sup>2</sup>
Ukupno bez koef.:					82.94 m <sup>2</sup>
Ukupno sa koef. 0.97:					80.45 m <sup>2</sup>